

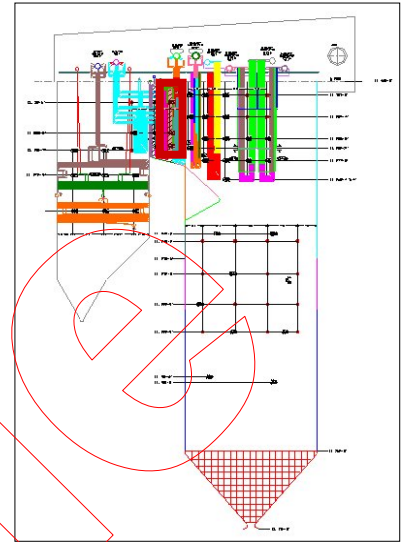
## AREA: Intermediate Reheater

By: UDC

The area was numbered from boiler left side to boiler right side. Tubes were counted from front to rear or top to bottom unless otherwise specified.

All items were marked with white grease stick and color coded by spray paint as follows:

- Red - Tube Replacement
- Green - Pad Weld
- Blue - Shield Installation



### P R I O R I T Y # 1 R E P A I R S

Area: Intermediate Reheater

Repair #: 101-a Record:# 64

Action: TUBE REPLACEMENT

Priority #: 1

General Location:

Intermediate Reheater, Leading Edge, IK-3L/3R  
Elevation: 278'

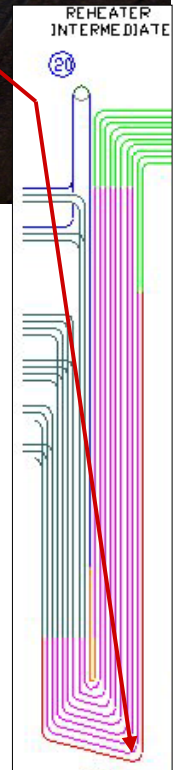
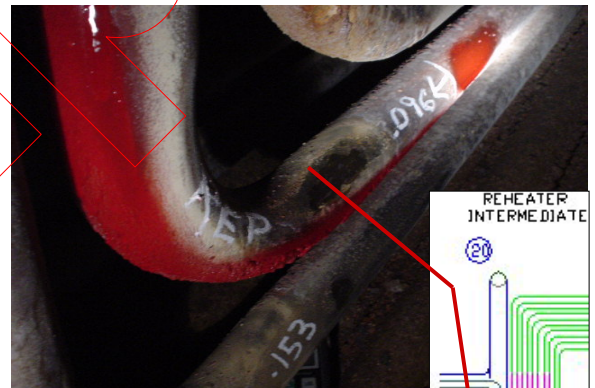
Cause: Erosion (Soot Blower)

Appearance: Eroded Tubing

Material: 2.25" OD x .165" MWT x SA-209T1A

Material Stock Code: #838960

UT Result: 0.096"



Replace tube 2 of assembly 46 to include (1) 90 degree radius bend. The tube has sustained wall loss from soot blower erosion and has a remaining wall thickness of 0.096". The cut lines will be 12" from the centerline of the radius bend on both the horizontal and vertical section of tubing.

**NOTE: Do not remove tubing until replacement material is verified in stock.**

Work Order: \_\_\_\_\_

Status: **Inspected**

Work in Progress

Work Completed